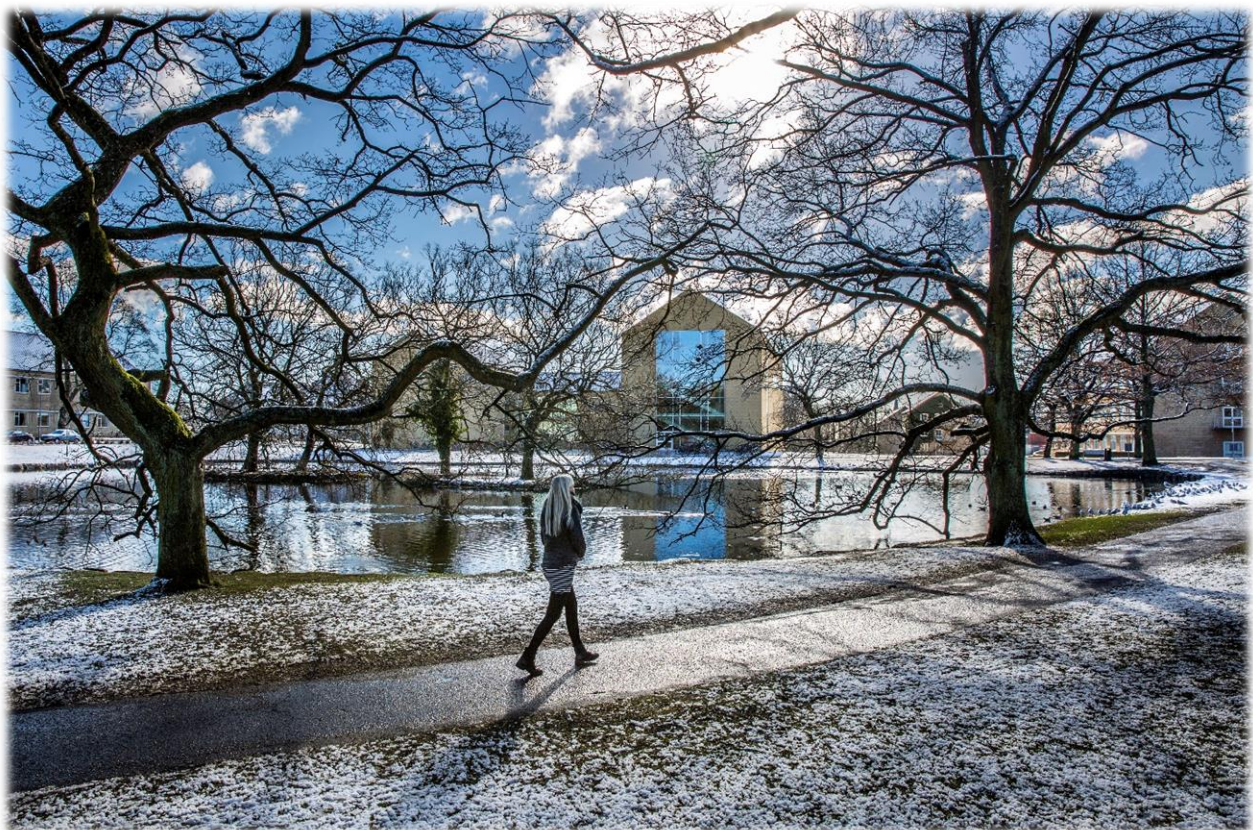


PHD DAY

HEALTH

Programme

17 JANUARY 2025



PHD DAY 2025 PROGRAMME

17 JANUARY 2025, THE PER KIRKEBY AUDITORIUM, THE LAKESIDE LECTURE THEATRES

- 8.30 **Welcome by Organizing Committee Chair and by the Chair of the PhD Association (in Per Kirkeby)**
Anders Etzerodt, Associate professor, Department of Biomedicine, Aarhus University
Livie Yumeng Li, PhD student, Chair of the PhD Association at Health, Aarhus University
- 8.40 **Keynote lecture by Professor Jens Juul Holst Department of Biomedical Sciences and Senior Group Leader at Novo Nordisk Foundation Center for Basic Metabolic Research, The Faculty of Health and Medical Sciences, University of Copenhagen (in Per Kirkeby) (45 min)**
Introduced by Organizing Committee Chair Anders Etzerodt, Associate professor, Department of Biomedicine, Aarhus University
- 9.25 **Short break with coffee/tea and fruit**
- 9.50 **Fogh Nielsen Prize Competition (60 min)**
Per Kirkeby, The Lakeside Lecture Theatres
- 11.05 **First round of sessions**
The Lakeside Lecture Theatres, Anatomy (build. 1231), Public Medicine Auditorium (build. 1262/101), building 1264 (209 and 310) and Bartholin (build. 1241)
- 12.35 **Break with lunch and networking**
- 13.30 **Keynote lecture by Professor Aasa Feragen, Section for Image Analysis and Computer Graphics, Technical University of Denmark (in Per Kirkeby) (45 min)**
Introduced by Organizing Committee Chair Anders Etzerodt, Associate professor, Department of Biomedicine, Aarhus University
- 14.30 **Second round of sessions**
The Lakeside Lecture Theatres, Anatomy (build. 1231), Public Medicine Auditorium (build. 1262/101), building 1264 (209 and 310) and Bartholin (build. 1241)
- 15.40 **Coffee, cake and see you later**
The programme for the day ends on different locations
-
- 18.30 **Dinner and award ceremonies**
DGI-Huset, Aarhus C
Festive speech: Stine Sofia Korreman

PRACTICAL INFORMATION

- There will be a name tag for you if you are signed up for a presentation or as chair/co-chair. You can collect this at the reception on the lowest level in the Lakeside Lecture Theatres.
- Lunch is served at two locations: the Lakeside Lecture Theatres and in building 1231 on the ground floor.
- A photographer from Aarhus University will be present at the event. Photos taken at the event will only be used in Aarhus University contexts, for example as publicity for/in the invitation to a similar event. If you do not wish to be photographed, please contact the photographer.

THE ORGANIZING COMMITTEE, PHD DAY 2025

- Anders Etzerodt, Associate professor, Department of Biomedicine, Chair PhD Day 2025
- Anika Kofod Kousgaard Petersen, PhD student, Department of Forensic Medicine, Co-chair PhD Day 2025
- Alma Becic Pedersen, Professor, Department of Clinical Medicine
- Anders Schram, PhD student, Department of Clinical Medicine
- Emil Ammitzbøll Weissmann, PhD student, Department of Clinical Medicine
- Helene Hallas, PhD administrator, Graduate School of Health
- Henning Grønbæk, Clinical professor, Department of Clinical Medicine
- Johan Palmfeldt, Associate Professor, Department of Clinical Medicine
- Luana Barreto Domingos, PhD student, Department of Biomedicine
- Mayuri Sandesh Charnalia, PhD student, Department of Clinical Medicine
- Merete Bjerrum, Associate professor, Department of Public Health
- Pernille Lajer Sørensen, PhD student, Department of Biomedicine
- Reimar W. Thomsen, Professor, Department of Clinical Medicine
- Rikke Horsted Bundgaard, PhD administrator, Graduate School of Health
- Rubens Spin-Neto, Associate professor, Department of Dentistry and Oral Health
- Salma Karim, PhD student, Department of Clinical Medicine

Social Media: Facebook: PhD Association Health

THE KEYNOTE SPEAKERS

Professor Jens Juul Holst, Department of Biomedical Sciences and Senior Group Leader at Novo Nordisk Foundation Center for Basic Metabolic Research, The Faculty of Health and Medical Sciences, University of Copenhagen



Professor Jens Juul Holst is a renowned Danish physician and physiologist, best known for his discovery of the gut hormone GLP-1, which has revolutionized the treatment of Type 2 diabetes and obesity. His work has been foundational in the development of life-changing therapies, including the popular weight-loss drug Wegovy. Over his distinguished career, Professor Holst has received numerous accolades, including the Warren Alpert Foundation Prize, the Banting Medal, and the 2024 Princess of Asturias Award for Technical & Scientific Research.



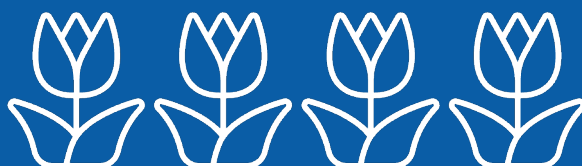
Professor Aasa Feragen, Section for Image Analysis and Computer Graphics, Technical University of Denmark

Professor Aasa Feragen is the professor behind the “Bias and fairness in medicine” project, researching the field of AI fairness in healthcare. Her work addresses how bias in AI algorithms can impact medical decision-making and explores the ethical challenges of creating “fair” predictive models. Through large-scale register studies of major depressive disorder, she examines the nature of bias in diagnosis and treatment, aiming to redefine fairness in medicine in the intersection of ethics, philosophy, and mathematical modelling.

Hey there, PhD minds so bright,
Do you crave change, to spark the light?
At AU Health, let's lift the game,
Join our cause, and make a name!

The PhD Association calls to you,
For brighter paths and visions through.
Follow us on Facebook, LinkedIn too,
Stay informed on what we do!

Events and stories, together we grow,
A place for all, let the spirit flow.
All are welcome, your voice is key,
Join us now, and shape the way!

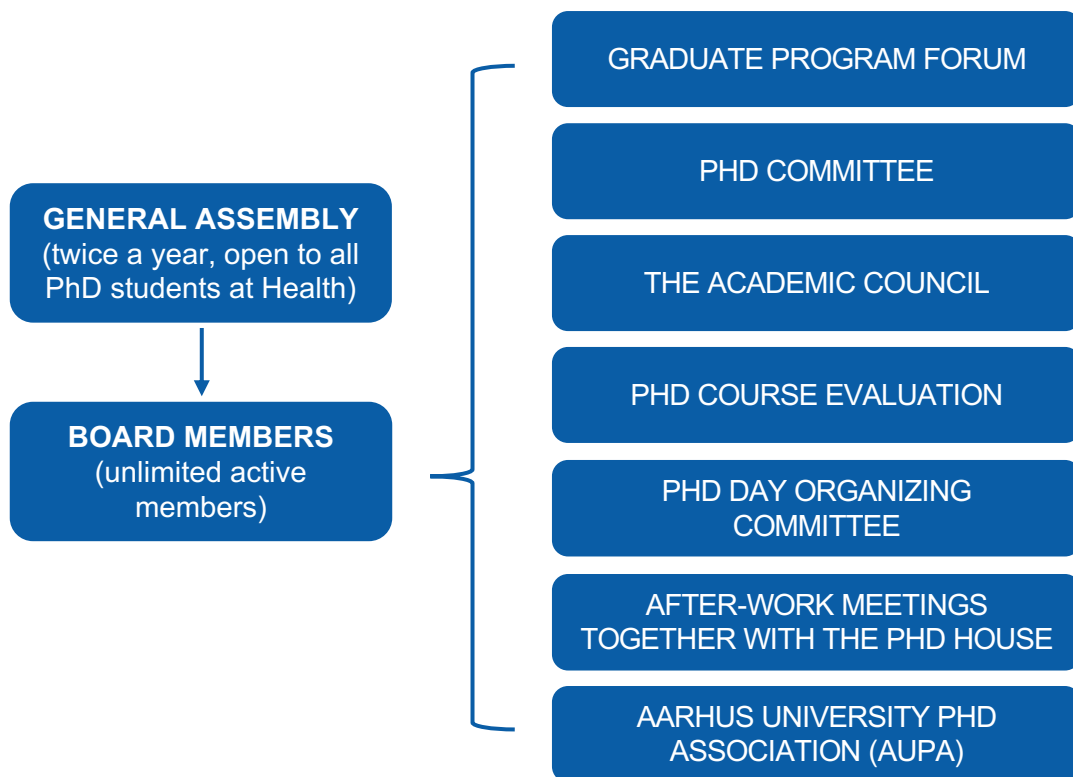




PhD Association

Health, Aarhus University

for all PhD students at the Faculty of Health



*We aim to create better education and better conditions
for PhD students at the Faculty of Health*

*Find us on **Facebook** or **LinkedIn** at:*

PhD Association Health

Check out our webpage: phdassociation.dk

ALL PHD STUDENTS CAN JOIN!



is going to launch its

8th Nordic PhD Summer School At University of Oslo, 18-19 August 2025

More information **very soon** at <https://www.nordochalth.net/>

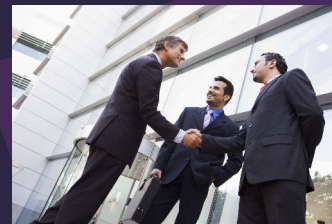
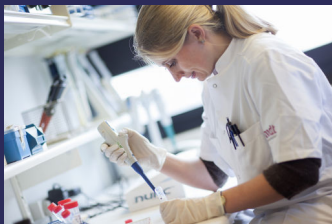
Attend PhD courses in the NorDoc network for free

PhD courses at the 21 NorDoc partner institutions are **free of charge** for all PhD students at Health. The graduate school offers **financial support to cover your travel and accommodation costs**.



AU Career PhD & JR

Career services for PhDs and Junior Researchers



Would you like to get ahead and engage in career development during your PhD or postdoc?

Do you know which career path to choose when finishing your PhD or postdoc?

Do you know which specific competences companies value when hiring researchers?

Are you aware of your many opportunities?

Our services

- Career events
- Interaction with industry
- Individual career counselling
- Support in your career development
- Assessing your competencies and strengths
- Feedback on CVs and cover letters
- Mentor programme

Vibeke Broe

Ph.D. Career Consultant
Phone: +45 2942 6029
Email: vibr@au.dk

Miriam Kobbersmed

Ph.D. Career Consultant
Phone: +45 93522564
Email: mkob@au.dk





AARHUS
UNIVERSITY

Aarhus University's **Alumni Network**

- A universe of knowledge and relations

Your knowledge matters - stay in touch

Sign up for **free membership** and join 40,000 other alumni, students, PhDs and employees - get access to benefits, life-long learning and the opportunity to contribute with knowledge, experience and network.



alumner.au.dk/en/become-a-member



Nov 2024

AU LIBRARY HEALTH SCIENCES

- Systematic literature search designed for your specific project
- Tips and tricks for PubMed, Embase, Cinahl, Covidence etc.
- Citation searches in Scopus and Web of Science
- EndNote – courses and support
- ORCID, Journal Impact Factor, H-index, and Pure
- Copyright and Open Access
- Courses in PubMed, EndNote etc.

Come by the library, phone or email us and we will help you.

AU Library, Health Sciences

Victor Albeck Building
Vennelyst Boulevard 4
DK-8000 Aarhus C

Tel. +45 2265 0073

sundhedsvidenskab.aul@kb.dk

Opening Hours

Monday – Thursday 9 a.m. - 5 p.m.

Friday 9 a.m. - 3 p.m.

library.au.dk



Upgrade your teaching and supervision practices

Course: The Reflective Teacher

The course is about the role of the teacher in student-centred teaching. You will gain knowledge, skills, and competences in pedagogical principles related to being a university teacher who can reflect on your own and colleagues' teaching practices. You will also develop and complete the first draft of your teaching portfolio.

<https://ced.au.dk/en/courses/the-reflective-teacher>



Course: The PhD student as supervisor for undergraduate students

Are you acting as co-supervisor for undergraduate students' bachelor projects, written assignments, master's theses, or research year assignments? Then you play an important role as a near-peer supervisor, guiding students in their learning. This course will prepare you for the role.

<https://ced.au.dk/en/courses/the-phd-student-as-supervisor-for-undergraduate-students>



AU Educate – Inspiration for your teaching

At AU Educate, you can find inspiration for your teaching and learn more about relevant topics in university teaching. Learn from the practice of others and try new teaching activities. The content will serve as the perfect remedy for your professional teaching development.

<https://educate.au.dk/en/>



About the

Centre for Educational Development

The CED offers AU teaching staff free competency development, consultation services, and collaboration on higher education pedagogy, educational technology, teaching, and education.

Visit us:

ced.au.dk

Contact us:

ced@au.dk

+45 21 55 14 19

Your occupational health and safety organization



Your Safety
Our Commitment



AARHUS
UNIVERSITY
HEALTH

CONNECT

REGION MIDTJYLLANDS DATASTØTTECENTER

10 TIMERS GRATIS RÅDGIVNING TIL DIN FORSKNING

HVAD?

RÅDGIVNING OM BRUG AF
SUNDHEDSDATA I FORSKNING

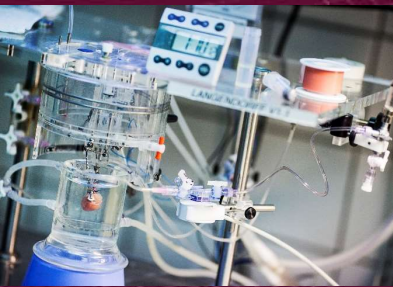
HVEM?

FOR FORSKERE OG KLINIKERE PÅ AU
OG I REGION MIDTJYLLAND

HVORDAN?

SE MERE PÅ: WWW.CONNECT.AUH.DK





NETWORK STRATEGY

Cardiovascular research at AU and the hospitals in Region Midt contributes to **patient** welfare and health

Interdisciplinary cardiovascular research to address societal changes

Cardiovascular research and degree programmes of the highest **international** quality

Development of talents within cardiovascular research

WHAT DO WE OFFER?

- Annual meetings
- Summer schools
- Seminars & workshops
- Networking
- Interdisciplinary collaboration
- Project bank
- PhD programme
- PhD courses

Visit our website

Join our network



Experiments

Research in cardiovascular function and disease mechanisms with cells, isolated organs and animal models.



Patients

Research in prevention, diagnostic tools, and therapy of cardiovascular diseases in patients.



CONTACT

Anja P. Einholm
Network Coordinator
Phone: +4593508408
E-mail: apec@au.dk

www.health.au.dk/en/the-cardiovascular-network

Join the Food and Nutrition Network at AU Health



Food and Nutrition is relevant for both clinical outcome and research in health and disease. As this field of research often requires a multidisciplinary approach as well as expertise (methodological and/or clinical), the network offers a unique opportunity to collaborate and develop new skills. The network stimulates and connects research and teaching activities within food and nutrition at a pre- and post-graduate level.

A wide array of technologies and research methodologies are available through the network ranging from experiment clinical-, epidemiological-, biomedical- to qualitative approaches. Stimulation of research collaboration across the Faculty of Health and other faculties at Aarhus University as well as method development and increased awareness of and accessibility to already existing research methodologies are important scopes of the work.

Among the pertinent research questions that are addressed by the network are:

- What are health consequences of the green transition?
- What are the potential health benefits from novel food products and food processing technologies?
- How do we prevent obesity and associated negative impact on well-being?
- How do we prevent malnutrition, sarcopenia, and cachexia among vulnerable subjects?
- What is the physiology behind consumption and ingestion of food and nutrition?
- How does disabilities and disease conditions impair normal consumption and ingestion of food?

The network serves as a platform for larger research projects initiated from within the network or through external invitations. This involves communicating with funding institutions, connecting researchers, and stimulating food and nutrition research among peers at AU Health.

The network also serves as a forum for coordination of established network activities in food and nutrition research outside AU Health.

Join the Food and Nutrition Network if you are interested in the activities within the network, wish to broaden your horizon within food and nutrition, or are interested in collaborations! The network is relevant and open for scientists at all levels.

To join the network, please visit <https://health.au.dk/en/the-food-and-nutrition-network>

Join the Inflammation Network

Inflammatory and infectious diseases continue to be significant global health challenges. As a society, our quest for understanding the interplay between inflammation and the development of autoimmunity and cancer, uncovering biomarkers, and deciphering the molecular mechanisms of infectious and inflammatory diseases remains paramount. The Inflammation Network is where multidisciplinary collaboration leads to the formulation of the right questions and the discovery of answers.

Our network comprises an extensive group of researchers, each with a keen interest in various aspects, including immune-mediated diseases, diagnostic methodologies, epidemiological insights, inflammatory markers, intracellular immune pathways, human genetics, and a deep comprehension of cell populations and tissue structures. Our steering committee also includes **two dedicated PhD student representatives** Lotte L. Eriksen and Marvin Werner and one **dedicated postdoc representative** Fernando Valentim Bitencourt.



Scan this to join
via our website



What's in it for early career researchers?

The Inflammation Network opens doors for early career researchers, providing an invaluable opportunity to expand your research network. These connections can pave the way for enduring professional relationships that may prove instrumental in shaping the trajectory of your future research endeavors. Researchers at all stages of their careers, including those who are still pursuing education, play an integral role within the Inflammation Network. **PhD student** Morten Kelder Skouboe, a member of the research group

at the Department of Biomedicine, shares his perspective:

"I've signed up to get a better idea of what's going on in other areas, and perhaps to get a clearer understanding of how my research skills can be used in other research groups working on things that I find really exciting".

Save the date and sign up!

Mark your calendar for **our 5th Inflammation Network Day**, scheduled for **March 13 2025**. A day filled with insightful talks that bridge the realms of basic and clinical research in inflammation, infection, and autoimmunity. Our program features excellent keynote speakers who will delve into topics such as infection immunology, the microbiome, tumor immunology, and autoimmunity. You can also expect numerous talks from junior researchers!



Scan this to read more and register
for 5th Inflammation Network Day

Our focus the next couple of years

- Continuous promotion and bridging of basal and clinical research within diseases related to inflammation, infection, and immunopathology
- Internationalisation, including Circle U. initiatives
- Engagement of younger researchers in the network, including the steering committee
- Establishment of focus groups related to specific topics, methodologies, and diseases

Network vision

Strengthen Aarhus University's position
Bridge university-based research departments, faculties & clinical medicine
Improve recruitment and visibility
Increase funding opportunities

THE PERSONALISED MEDICINE NETWORK

WHO ARE WE?

Members include junior and senior researchers and clinicians across many fields, including genetics, epidemiology, molecular biology, bioinformatics, pharmacology, law and ethics, and more!

READ MORE
& SIGN UP HERE



SCAN ME

WHAT CAN WE OFFER?

- Biennial international conferences with international and national experts
- Annual meetings
- Regular seminars
- Specialised focus group meetings
- Up-to-date news on upcoming events, PhD courses, and grant funding opportunities
- Collaboration with the National Academies: Danish Cardiovascular Academy, Danish Data Science Academy, Danish Diabetes & Endocrine Academy, and Neuroscience Academy Denmark



THE TRANSLATIONAL CANCER NETWORK



VISION & STRATEGY

- Accelerating translation of scientific discoveries into tangible clinical applications
- Bring basic science into clinical practice and vice versa
- Involve the public and patients in our translational research through communication and outreach
- Encouraging an environment of open dialogue and mutual understanding

THE NETWORK OFFERS:

- Interdisciplinary collaborations
- Seminars & workshops
- Annual meetings
- Summer schools
- PhD courses



SCAN TO JOIN THE NETWORK

[linkedin.com/showcase/the-translational-cancer-network](https://www.linkedin.com/showcase/the-translational-cancer-network)



Are you WORKING within the field of cardiovascular physiology, related clinical divisions, or do you have a professional interest in the cardiovascular health?



**Danish
Cardiovascular
Academy**

dcacademy.dk

Become a member of the DCAcademy network:

- Receive latest news and information from DCAcademy (~6 times a year)
- Stay updated on DCAcademy grants, events, and courses



← click or apply camera for details

Apply for DCAcademy grants:

- DCAcademy PhD scholarships (1/3, 2/3 or full scholarships)
- DCAcademy Postdoctoral fellowships (2 year)
- DCAcademy Clinical Postdoctoral fellowship (or 20 % over 5 years)



Deadline - 21 of February 2025, 12:00 PM

← click or apply camera for details

Register for DCAcademy events:

- DCAcademy Postdoctoral Winter Meeting 2025
- Cardiometabolic Networking Summit 2025
- Neurovascular coupling in metabolic brain diseases. The DCA & NAD event.
- DCAcademy Summer Meeting 2025
- Diet and Cardiovascular Health: From Fatty Acids to Foods and Dietary Patterns
- Integrative Human Cardiovascular Control 2025
- Vascular-Adipose Link: Exploring the Intricacies of Health and Obesity



← click or apply camera for details



Dcacademydk



@DCAcademyDK



Danish Cardiovascular Academy





**Danish Diabetes and
Endocrine Academy**

Funded by the Novo Nordisk Foundation



**Danish Diabetes and
Endocrine Academy**



Are you an early-career researcher within the research fields of diabetes, metabolism and/or classical endocrinology? Are you seeking funding for your research, excellent education activities or new collaborations?

Check out Danish Diabetes and Endocrine Academy (DDEA):

- 20 February, Aarhus, DK – Meeting on **Vascular-Adipose Link: Exploring the Intricacies of Health and Obesity** *In collaboration with Danish Cardiovascular Academy (DCA)*
- 12-13 March, Korsør, DK – Meeting on **Diabetes and the Bio-psycho-social Model in a Life Course Perspective**
- April 7 – Copenhagen, DK – Meeting on **Endocrinology from Cradle to Adulthood**: Joint Meeting by Paediatric and Endocrine Societies
- April, DDEA Website – **Call for DDEA PhD Scholarships and Postdoc Fellowships**
- May, TBD, DK - **Intermediate Course on Reproducible Research in R**
- 26-27 May Odense, DK; **PhD Course on the Patient a Resource in Research**
- 2-3 June, Faroe Islands, FO; **Symposium on Emerging Strategies in Obesity Prevention and Treatment**
- 25-25 August, Ebberup, DK - **DDEA PhD Summer School on Diabetes, Metabolism & Endocrinology**
- 6-9 October, Kibæk, DK **Postdoc Summit**
- 20-23 October, Korsør, DK - **PhD Course on Basic Cardiometabolic Research**
Co-organised with the Danish Cardiovascular Academy
- December, TBD, DK - **Advanced Course on Reproducible Research in R**

And many other interesting symposia and networking events that we encourage PhD students with an interest to participate in.

Read more and sign up at www.ddeacademy.dk

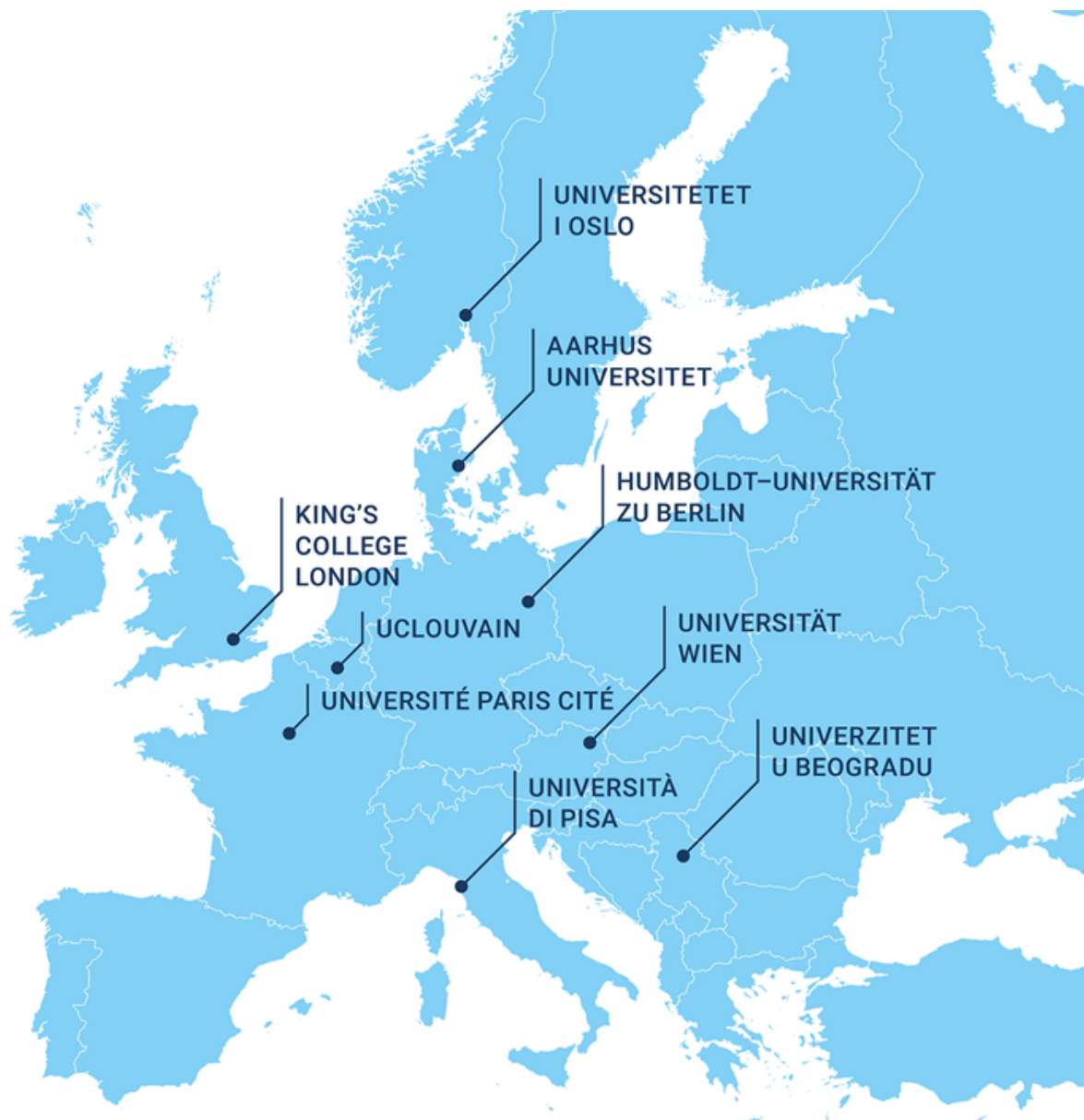




Circle U.
European University Alliance



Co-funded by the
Erasmus+ Programme
of the European Union



Learn more at

www.circle-u.eu

Or contact AU Academic Chair for Global Health,
Professor Christian Wejse

PHD DAY 2025

SESSION OVERVIEW AND CHAIRS



SESSION OVERVIEW

11.05-12.35 – First round of sessions

PhD Innovation Workshop:	Lakeside Lecture Theatre, Eduard Biermann Auditorium
Session 1:	Lakeside Lecture Theatre, Merete Barker Auditorium
Session 2:	Lakeside Lecture Theatre, Jeppe Vontilius Auditorium
Session 3:	Lakeside Lecture Theatre, William Scharf Auditorium
Session 4:	Anatomy (Building 1232), 1 st floor Big Anatomy Auditorium
Session 5:	Anatomy (Building 1231), 2 nd floor, Room 214
Session 6:	Anatomy (Building 1231), 2 nd floor, Room 216
Session 7:	Anatomy (Building 1231), 2 nd floor, Room 220
Session 8:	Anatomy (Building 1231), 2 nd floor, Room 224
Session 9:	Anatomy (Building 1231), 2 nd floor, Room 228
Session 10:	Anatomy (Building 1231), 2 nd floor, Room 232
Session 11:	Anatomy (Building 1231), 4 th floor, Small Anatomy Auditorium
Session 12:	Building 1262, 1 st floor, Room 101 – Public Medicine Auditorium
Session 13:	Building 1264, 2 nd floor, Room 209
Session 14:	Building 1264, 3 rd floor, Room 310
Session 15:	Bartholin (Building 1241), 1 st floor, Room 114 – Auditorium 4
Session 16:	Bartholin (Building 1241), 1 st floor, Room 119 – Auditorium 3
Session 17:	Bartholin (Building 1241), 1 st floor, Room 125 – Auditorium 2
Session 18:	Bartholin (Building 1241), 1 st floor, Room 135 – Auditorium 1

14.30-15.40 – Second round of sessions

Session 19:	Lakeside Lecture Theatre, Eduard Biermann Auditorium
Session 20:	Lakeside Lecture Theatre, Merete Barker Auditorium
Session 21:	Lakeside Lecture Theatre, Jeppe Vontilius Auditorium
Session 22:	Lakeside Lecture Theatre, William Scharf Auditorium
Session 23:	Anatomy (Building 1232), 1 st floor Big Anatomy Auditorium
Session 24:	Anatomy (Building 1231), 2 nd floor, Room 214
Session 25:	Anatomy (Building 1231), 2 nd floor, Room 216
Session 26:	Anatomy (Building 1231), 2 nd floor, Room 220
Session 27:	Anatomy (Building 1231), 2 nd floor, Room 224
Session 28:	Anatomy (Building 1231), 2 nd floor, Room 228
Session 29:	Anatomy (Building 1231), 2 nd floor, Room 232
Session 30:	Anatomy (Building 1231), 4 th floor, Small Anatomy Auditorium
Session 31:	Building 1262, 1 st floor, Room 101 – Public Medicine Auditorium
Session 32:	Building 1264, 2 nd floor, Room 209
Session 33:	Building 1264, 3 rd floor, Room 310
Session 34:	Bartholin (Building 1241), 1 st floor, Room 114 – Auditorium 4
Session 35:	Bartholin (Building 1241), 1 st floor, Room 119 – Auditorium 3
Session 36:	Bartholin (Building 1241), 1 st floor, Room 125 – Auditorium 2
Session 37:	Bartholin (Building 1241), 1 st floor, Room 135 – Auditorium 1

BUILDING LOCATIONS

Anatomy (1231)

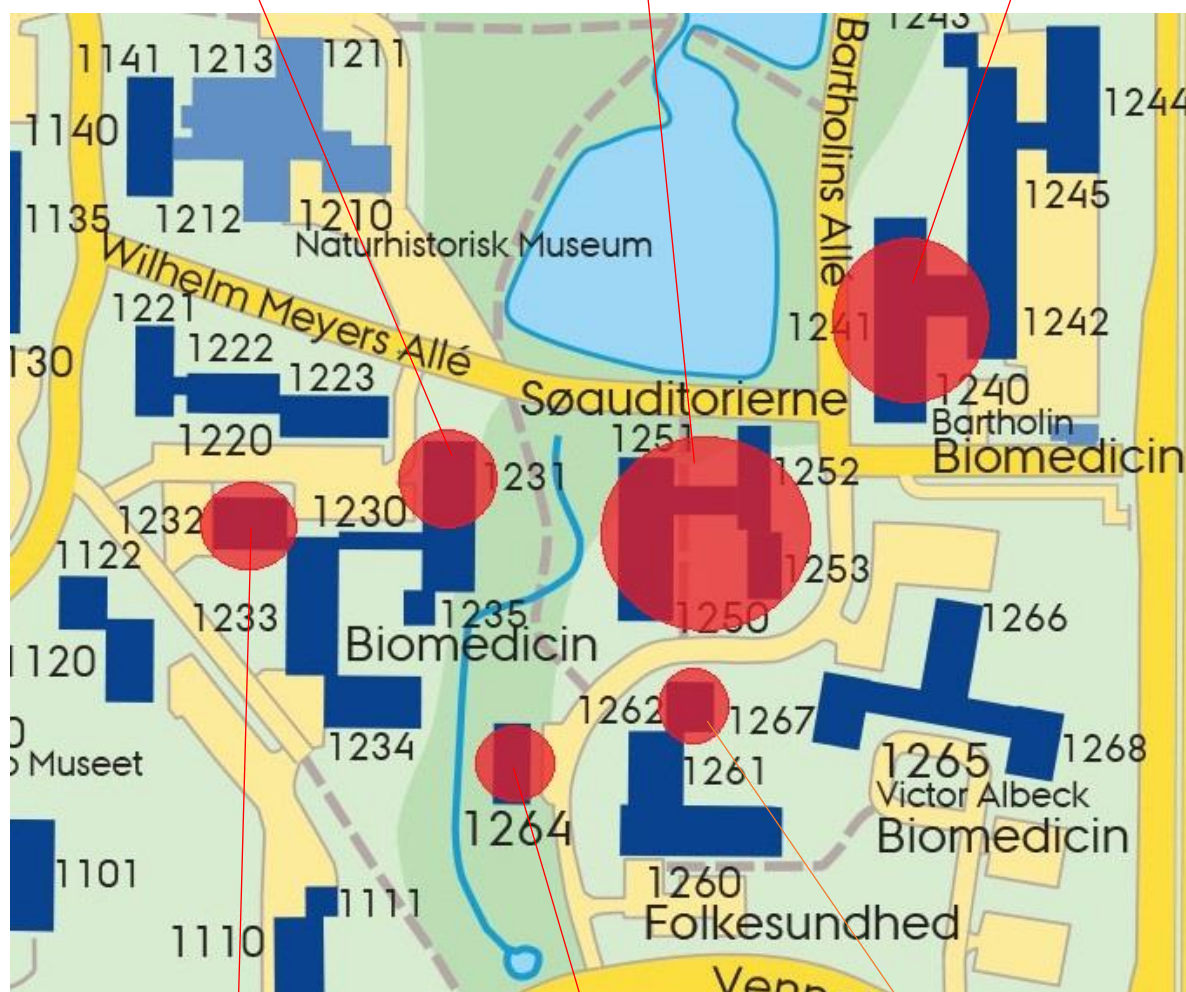
Session 5-11 and
24-30

Lakeside Lecture Theatres

PhD Workshop
Session 1-3 and 19-22

Bartholin (1241)

Sessions 15-18 and
34-37



Anatomy (1232)

Session 4 and 23

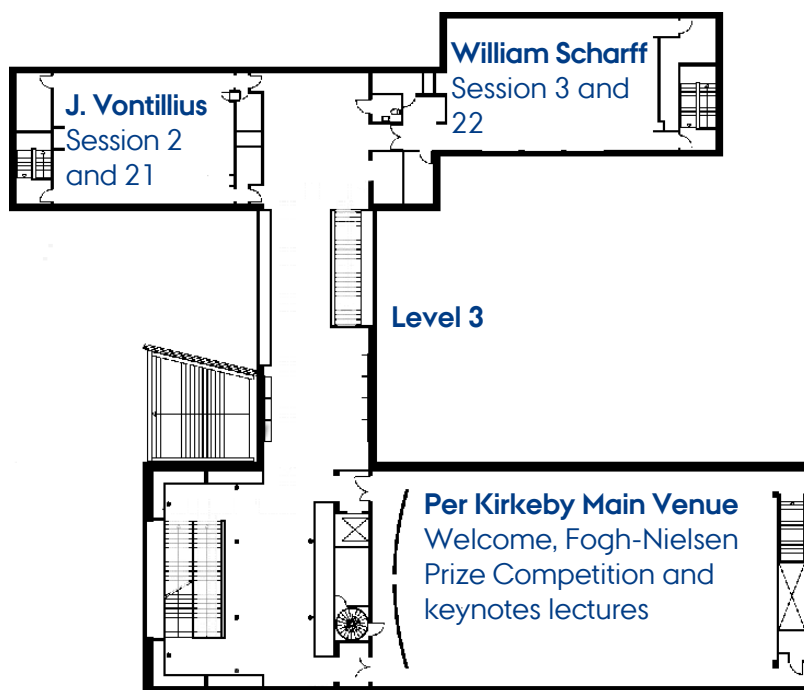
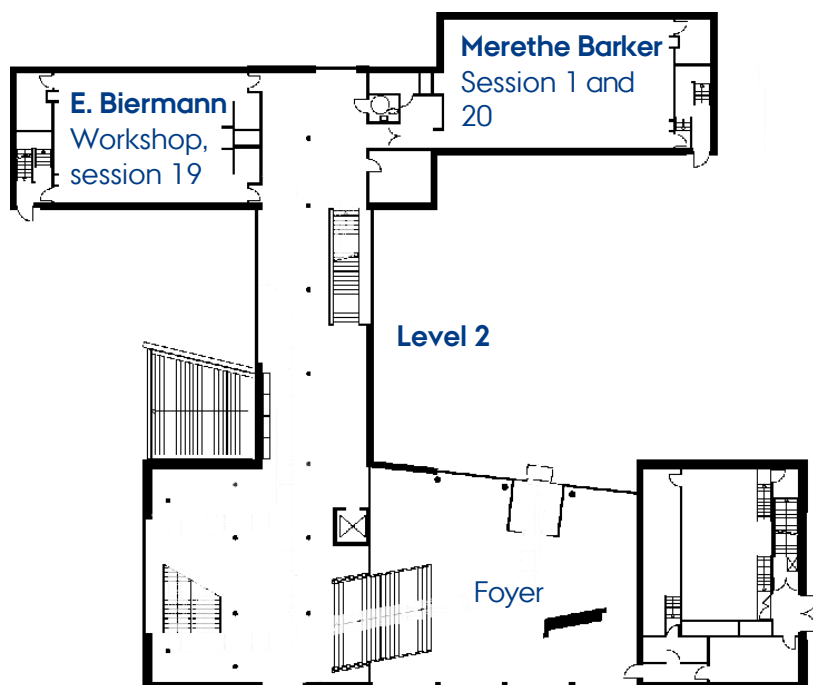
Building 1264

Sessions 13-14 and 32-33

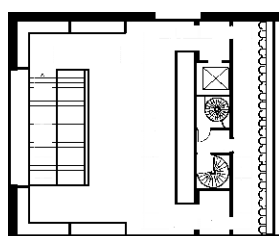
Public Medicine

Auditorium (1262)
Session 12 and 31

LAKE SIDE LECTURE THEATRES



Level 4



SESSION CHAIRS

Find yourself and abstract titles belonging to your session by searching the file (Ctrl+F)

FOGH-NIELSEN COMPETITION – 9.50 TO 10.50

Chair: Ida Vogel

Co-chair: Anika Kofod Petersen

FIRST ROUND OF SESSIONS – 11.05 TO 12.35

Session	Senior chair	Co-chair
1 - Basic medical research 1	Ole Halfdan Larsen	Maithri Prasad Aspari
2 – Surgery 1	Thomas Baad-Hansen	Josefine Beck Larsen
3 - Mental health 1	Christine Parsons	Oliver Kjærlund Hansen
4 - Endocrinology	Jens Bruun	Lukas Ochsner Ridder
5 - Bladder and kidney disease	Sebastian Frische	Kathrine Pedersen - CANCELLED
6 - Diabetes and cardiometabolic disease	Esben Søndergaard	Anders Mellemkjær
7 - Qualitative research and public health	Knud Ryom	Julie Hauer Vendelbo
8 - Imaging diagnostics	Marta Diaz Del Castillo	Karolina Klucznik
9 - Neuroscience 1	Kathrine Agergård Kaspersen	Emil Winkel
10 - Neuroscience 2	Poul Henning Jensen	Ina Grønkjær Laugesen
11 - Public health 1	Annett Dalbøge	Anitha Malling Tind
12 - Cardiovascular disease 1	Kasper G. Lauridsen	Christel Gry Aagren Nielsen
13 - Immune mediated diseases 1	Klaus Eyer	Lise Filt Jensen
14 - Rehabilitation	Julie Duval Jensen	Majbritt Jeppesen

15 - Cancer 1	Pia Kirkegaard	Anne Andresen
16 - Epidemiology	Alma Becic Pedersen	Camilla Kjersgaard
17 - Cancer diagnostics 1	Deirdre (dee) Cronin Fenton	Kristoffer Moos
18 - Drug risks and benefits	Natalya Fedosova	Søren Dabelsteen Isidor

SECOND ROUND OF SESSIONS – 14.30 TO 15.40

Session	Senior chair	Co-chair
19 - Basic medical research 2	Niels Okkels	Trine Rasmussen
20 - Reproductive health	Niels Uldbjerg	Anna Melgaard
21 - Neuroscience 3	Lise Kirstine Gormsen	Johannes Høgfeldt Jedrzejczyk
22 - Infectious disease biology	Jesper D. Gunst	Malene Risager Lykke
23 - Surgery 2	Katrine Emmertsen	Josephine Olsen Kipp
24 - Basic medical research 3	Gregers Wegener	Aisha Shigna Nadukkandy
25 - Cancer 2	Torben Stamm Mikkelsen	Christina Glismand Truelsen
26 - Public health 2	Dorte Rytter	Sofie Sejer Skoubo
27 - Health statistics	Jacob Johansen	Rasmus Klitgaard
28 - Diagnostics and technology	Thien Vinh Luong	Line Kristensen
29 - Mental health 2	Katherine Louise Musliner	Amalie Lambert Mørkved - CANCELLED
30 - Qualitative research and mental health	Anna Louise Skovgaard	Michella Runge K Bjerregaard
31 - Public health 3	Henrik Kolstad	Danni Chen
32 - Immune mediated diseases 2	Bent Winding Deleuran	Xiangning Ding
33 - Paediatrics	Konstantinos Kamperis	Nicolai Kjældgaard Kristensen

34 - Cardiovascular disease 2	Leila Louise Benhassen	Thomas Jensen
35 - Cancer 3	Maja Ludvigsen	Theresa Jakobsen - CANCELLED
36 - Dentistry	Rubens Spin-Neto	Shirin Haghshenas Bilehsavar
37 - Cancer diagnostics 2	Mette Madsen	Marvin Werner

SESSION OVERVIEW

Find abstract titles by searching your name or session (Ctrl+F)

FOGH-NIELSEN COMPETITION – 9.50 TO 10.50

Anne Kraushaar Martensen: Electrical stimulation as prevention of postoperative ileus

Kirsten Woolpert: Endocrine therapy adherence and effectiveness in premenopausal breast cancer patients

Martin Qvist Rasmussen: Megalin-targeting antibody-drug conjugates for treatment of epithelioid mesothelioma

FIRST ROUND OF SESSIONS – 11.05 TO 12.35

Session 1 - Basic medical research 1

Pitch

Ellen Hayhurst Appel: Utilizing reprogrammable ADAR-based RNA sensors for novel intracellular cytokine detection - **CANCELLED**

Flash talk

Karina Rewitz: Real-Time Visualization of Copper Uptake in HepG2 Cells Using the Ligand Tracer Method

Pavani Rekulapally: New players involved in the establishment of phagophore-endoplasmic reticulum membrane contact sites (peMCSs)

Monja Rene Müller: The role of ubiquitination in the mechanism and regulation of aggrephagy

Laura Elgaard Isager Jensen: Integrative Analysis of Methylation Alterations and Copy Number Variants for Biomarker Discovery in Renal Cell Carcinoma

Saeideh Tavajoh: Inflammatory resolution in cardiometabolic health and disease

Anna Bøgh Lindholm: Characterization of primary porcine retinal endothelial cells and pericytes co-isolated with a developed method

Maria Hønholt Jørgensen: Advancing Clinical Implementation of ctDNA Detection Through External Quality Assessment

Ditte Kamille Rasmussen: Megalin ablation causes impaired heterophagy relevant in age-related macular degeneration

Ditte Marie Storm: Vascular and metabolic dysfunction in adipose tissue: a dangerous duo in obesity

Oral presentation

Clàudia Río-Bergé: ER-phagy-related proteins: enemies or allies of virus infections?

Session 2 - Surgery 1

Pitch

Jacob Schade Engbjerg: Is the Tip-Apex-Distance associated with the risk of reoperation after osteosynthesis with DHS in femoral neck fractures?

Hannah Inez Houborg: Tonsillectomy versus Tonsillotomy in the treatment of Recurrent Acute Tonsillitis: A Randomized Controlled Non-inferiority Trial

Flash talk

Rasmus Roost Aabling: Allogenic mesenchymal stem cell intraarticular injection for knee osteoarthritis therapy, an RCT explorative mode-of-action study

Christian Lind Nielsen: Vascularized fibular grafting following tumor resection demonstrates acceptable long-term outcomes in Denmark: a national retrospective cohort study

Laura Houstrup Matthiesen: Reoperations after Percutaneous Needle Fasciotomy for Dupuytren's Contracture – A retrospective cohort study

Louise Schmidt Grau: Dorsal genital nerve stimulation in patients with faecal incontinence and faecal urgency - a feasibility study with the novel UCon neurostimulator

Martin Mølhave: Evaluating Tonsil Surgery Quality in Denmark: Completeness of Data in the Danish Tonsil Database

Tanita Drejer Jeppesen: A novel expandable aortic annuloplasty ring for aortic valve repair

Andreea-Alexandra Bach-Nielsen: A systematic review on surgical treatment of recurrent rectal prolapse

David Kocemba: Diagnostic Accuracy of Selective Nerve Root Blocks in lumbar degenerative disease

Oral presentation

Ida Kaad Faurschou: Preliminary Results on Risk of Reoperation After Incision and Drainage for Pilonidal Sinus Disease from 2010-2021 - A Danish Population-Based Cohort Study

Session 3 - Mental health 1

Pitch

Marie Sønderstrup-Jensen: Candidate pathways and biomarkers in OGT-CDG - a novel intellectual disability syndrome

Emilie Roger Andersen: The impact of vortioxetine on the kynurenine pathway in flinders sensitive line rat model of depression

Katrine Bødkegaard Nielsen: Mental health in the Danish National Health Survey: Representativeness and implications

Flash talk

Leonardo Melo Rothmann: Signature Model for people with Cocaine Use Disorder: integrating neuroimaging, DNA methylation, and clinical outcomes

Alisha Silvia Mercedes Hall: Investigating the Familial Co-aggregation of Psychiatric, Somatic, and Behavioral Outcomes with Borderline Personality Disorder in a Swedish Birth Cohort: Shared Genetic or Environmental Factors?

Ziping Zhang: Medication Use in Severe Anorexia Nervosa: A Danish Register-based Study

Anne Marie Ladehoff Thomsen: Pubertal timing and tempo and anxiety disorders in Danish adolescents: a population-based cohort study

Frida Hæstrup: Temporal stability of an electronic health record-driven prediction model for type 2 diabetes among individuals with mental illness

Anette Faurskov Bundgaard: A longitudinal study comparing cognition between both biological parents and their offspring in families with parental schizophrenia or bipolar disorder

Jette Steinbach: Blood is thicker than water: Improving genetic prediction of psychiatric disorders

Oral presentation

Camilla Termansen Erichsen: Brain activity as a promising tool for diagnosing schizophrenia

Session 4 - Endocrinology

Pitch

Laura Woideemann Trans: The molecular mechanism of augmented renal HCO₃⁻ excretion during respiratory alkalosis

Victoria Bøttker: Blood glucose levels in pregnant non-diabetic women during treatment with betamethasone for fetal lung maturation

Thoranna Hlif Gilbertsdottir: Prenatal Exposure to Arsenic in Drinking Water and Type 1 Diabetes

Emaan Ghias: Exploration of a novel group of lactoylated amino acids as biomarkers and signaling molecules in metabolic diseases.

Ivonne Bedei: NIPT for Monosomy X and genetic variants of Turner syndrome - performance and phenotype

Thomas Hvid Jensen: Polyamine treatment in elderly patients with coronary artery disease (Poly CAD)

Mohamed Hassan: Defining the Vascular Niche of Human Adipose Tissue Across Metabolic Conditions

Flash talk

Camilla Mains Balle: Estrogen Replacement Therapy in Women with Turner Syndrome: A Randomized Controlled Trial

Trine Züricho Lyksholm: Exogenous Ketosis increases Renal Function and Sodium Excretion in Healthy Subjects

Ibrahim Alzaim: Defining the vascular niche of human adipose tissue across metabolic conditions

Julie Bondgaard Mortensen: Prevalence of metabolic dysfunction-associated steatotic liver disease in individuals born with low-birth-weight – a clinical screening study

Oral presentation

Hendrik Nicolaas Lourens: Overview of Demographic Data, Gender Identity, Gonadal Status and External Genitalia Score (EGS) in 23 true Ovotesticular DSD patients from a single centre in South Africa

Session 5 - Bladder and kidney disease

Pitch

Kristine Aarup: The role of LAPT5 in renal lipid metabolism in mouse models with kidney disease

Anne Sophie von Wowern: Intraoperative Ultrasound Assessment of Regional Lymph Nodes to Optimize the Lymph Node Dissection Template in Bladder Cancer

Ina Karstoft Ystrøm: PhD project: Consequences of Persistent Hyperparathyroidism in Kidney Transplant Recipients

Xabier Sørtvedt: mCCDcl1 cells as an in vitro model for the cellular remodeling of the kidney collecting duct during Li-induced nephrogenic diabetes insipidus

Flash talk

Sandra Hansen: Bile Acids – Renal Friend or Foe?

Peter Engholm Hjort: The impact of PDD on recurrence and progression in BCG-treated NMIBC patients: a nationwide follow-up study

Benjamin Bach Green: The renal urinary concentration mechanism: Towards a detailed model of Aquaporin-2 shuttling

Cristina Ballester I Bergadà: mRNA therapeutics delivery during machine perfusion of donor kidneys

Malene Söth Andersen: Bladder cancer risk following cancer negative cystoscopy – a population based cohort study

Nathalie Demuth Fryd: GreenBladder - Early Detection of Bladder Cancer in Residents in Greenland Using a Urinary Biomarker

Oral presentation

Nanna Østergaard Johnsen: Thrombocytes Constitute an Effective Clearance System for Uropathogenic Escherichia Coli in a Murine Model of Urosepsis

Session 6 - Diabetes and cardiometabolic disease

Pitch

Tine Storebjerg Knudsen: Pre-Pregnancy Care for Women with Pre-existing Diabetes – A Prospective Cohort Study

Sarah Maria Thornhøj Eriksen: Cardiovascular, Renal, and Skeletal Complications in Patients with Post-Surgical Hypoparathyroidism (CARE Hypo)

Jens Hohwü Voigt: Effects of intact and disrupted milk fat globule membrane on postprandial metabolic response to high-fat.

Anna Dons-Jensen: Effect of Treatment with Finerenone on Renal Target Organ Damage in Patients with Type 2 Diabetes – A Randomized Trial - **CANCELLED**

Flash talk

Natasha Amran Laursen: Clinical Experience with Denosumab Discontinuation

Vivi-Nelli Mäkinen: Fracture Liaison Service at Aarhus University Hospital – Two-year

experiences

Ida Borreby Pedersen: Register-based Cohort Study on the Non-specific Effects of Influenza Vaccination in Delaying Autoimmune Comorbidity in Individuals with Type 1 Diabetes

David Haldrup: Effects of extensive Weight loss on Insulin resistance and Lipid-kinetics in people with obesity and fatty liver Disease - The WILD study

Natasa Brkovic Zubanovic: Does co-administration of lactate to a meal affect postprandial nutrient absorption and fat disposition?

Mathias Flensted Poulsen: An activin type II receptor ligand trap prevents loss of cortical bone strength and cancellous bone mass in a mouse model of severe disuse osteopenia

Oral presentation

Katrine Høyer: Faecal microbiota transplantation for patients with diabetes type 1 and severe gastrointestinal neuropathy (FADIGAS): a randomised, double-blinded, placebo-controlled trial

Session 7 - Qualitative research and public health

Flash talk

Mette Eklund: Midwives' perspectives on working in a specialized unit for pregnancy loss - A qualitative study

Sissel Due Jensen: Managing the new wave of weight loss medication in general practice: A qualitative study

Kirstine Guld Frederiksen: Needs for nutritional support in patients receiving palliative chemotherapy: A qualitative study

Lene Gissel Rasmussen: Social Prescribing Initiatives Connecting General Practice Patients with Community-based Physical Activity: A Scoping Review with Expert Interviews

Emil Weissmann Jensen: 'I' as a Teacher? – Analyzing how I-positions Promote and Challenge Teacher Identity among Early Career Academics in Health Professions

Stina Bollerup: National scale-up of telehealth in Denmark: The role of translation in large-scale implementation processes

Rikke Bjerre Lassen: Multidisciplinary Teams for Patients with Chronic Conditions: A Scoping Review of Patient Perspectives and Experiences

Sarah Cecilie Tscherning: Developing a complex intervention to improve guidance for researchers involving patient partners in a research process

Charlotte Hald: Interventions and Communication Strategies for Sharing End-of-Life Care Preferences Among Independent Living Older Adults During Healthcare Transitions: A Scoping Review

Oral presentation

Helene Rask Dalby: Impact of colonic diverticulosis on daily life. The DIVIPACT study.

Session 8 - Imaging diagnostics

Pitch

Kamilla Kørup Trosborg: Deuterium Metabolic Imaging for the investigation of Alzheimer's Disease

Emma Paydari: Deciphering calcium signaling crosstalk between breast cancer cells and cancer associated macrophages

Kasper Holst Hansen: Structure of biofilm-forming functional amyloid PSMA1 from *Staphylococcus aureus*

Teresa Kirkegaard Jensen: Aquaporin-5 as a potential new target in breast cancer treatment

Morten Hulbæk Fog: Inflammatory Amyloids in Phenylketonuria

Flash talk

Niels Lech Pedersen: Perfusion MRI in stroke: Investigating the relation between relative transit time heterogeneity (RTH) and stroke subtypes in ischemic stroke

Giorgia Marino: In vivo explorative study of immune pathways in response to HSV-1 infection using Imaging mass cytometry for spatial analysis

Niels Abild Jespersen: Determination of the mechanisms of ketone body-induced beneficial cardiac effects in patients with chronic heart failure

Kristine Wiborg Høgsbjerg: Validating the ESTRO target consensus: pattern of breast cancer failures in the DBCG Skagen trial 1

Maja Kanstrup Jørgensen: Advanced molecular imaging of patients with primary biliary cholangitis

Oral presentation

Nadia Iraqi: Interscan Reproducibility Of Computed Tomography Derived Plaque Quantification Using A Semi-automated Analysis Software

Session 9 - Neuroscience 1

Pitch

Sia Eleni: Neuroepigenomics of THC and CBD Exposure during Pregnancy in the Developing Brain

Louise Hill-Madsen: Genetic and epigenetic background of inner ear dysfunction in Turner Syndrome

Caroline Vangsøe: Cytoprotective effect of conditioned extracellular vesicles in stroke

Janne Auning Hansen: Comprehensive Heritability Atlas of More Than 300 Phenotypes in the Danish Population: Insights from family and genotype data

Chen Zhang: Crosstalk in the Peripheral Nerve Microenvironment of Long-chain 3-Hydroxyacyl-CoA Dehydrogenase Deficiency: Implications for Mitochondrial Fatty Acid Oxidation and Neurorehabilitation

Flash talk

Silvia Genovese: Can music have an impact on the neurological fundamentals of sleep?

Peter Andreas Andersen: Pain and Sensory Disturbances in Patients with Nerve Root Lesions Confirmed by Magnetic Resonance Imaging

Frederikke Lynge Sørensen: Whole-brain 3D mapping and quantification of pathological alpha-synuclein aggregate spreading and toxicity in a mouse model of early-stage Parkinson's disease

Simon Arvin: Fast dopamine and serotonin dynamics in the human brain

Jacob Drachmann: Lack of regional differences in hypoxia-induced vasodilation and hyperperfusion in retinal arterioles in vivo

Oral presentation

Line Amalie Aarestrup Hellemose: Early interdisciplinary intervention (GAIN), to reduce persistent post-concussion symptoms in adults: Results from a stepped-wedge cluster randomised controlled trial

Session 10 - Neuroscience 2

Pitch

Maria Hovmann Andresen: Middle Cerebral Artery Remodelling as a Response to Alzheimer's Disease Proteins

Emil Breinholt Sørensen: Impact of Alzheimer's co-pathology in Lewy body dementia

Tim-Simon Burmeister: Harnessing the Vagus nerve immunomodulatory capacity as therapeutic intervention in Parkinson's disease

Gaia Fanella: Disclosing the most effective therapeutic transcranial magnetic stimulation strategy for reducing cortical excitability in Amyotrophic Lateral Sclerosis (ALS)

Emilie Dam Rosenberg: A framework to establish classes of pathogenic SORL1 variants allowing tailored personal medicine for Alzheimer's disease.

Flash talk

Fatemeh Yarmahmoudi: Inhibition of PI4KIII α as a Novel Potential Approach for Parkinson's Disease Treatment - **CANCELLED**

Naja Helt Andersen: Prevalence of isolated REM-sleep behavioral disorder in Idiopathic Polyneuropathy with cardiac sympathetic denervation: A Cohort Study.

Jesper Helbo Storgaard: Reinnervation as prognostic mediator in patients with amyotrophic lateral sclerosis

Johanne Aarup Lauritsen: Diagnostic potential of monoclonal antibodies targeting cytotoxic α -synuclein oligomers

Elizaveta Melnikova: TMEM16A chloride channel in control of cerebral perfusion in health and ischemic stroke

Oral presentation

Lara Marziani: "Exploring RIC-miRNAs as novel mediators in stroke-related inflammation"

Session 11 - Public health 1

Pitch

Fridtjov Smith-Gahrsten Tvedten: Variation in answering machine messages in daytime general practice and its relation to the use of out-of-hours primary care

Jacob Friso Wierema: Effect of implementing a uniform telephone answering machine messages in daytime general practices on the use of out-of-hours primary care.

Lise Kjær Schou: Proton Therapy for Rectal Cancer

Sofie Bech Vestergaard: Health literacy strengths and challenges among people with gout

Nanna Emilie Nørgaard Eg: Association Between Cardiac Arrhythmia and Air Pollution

Flash talk

Anne Sofie Baymler Lundberg: A process evaluation of an RCT with cross-sectoral videoconferences between general practitioners and endocrinologists discussing patients living with type 2 diabetes

Frederik Teicher Kirk: Management of Wilson Disease across Europe: An international physician-oriented survey by the ERN-RARE Liver group.

Bjarke Godske Baisner: Breaking Barriers in Breast Cancer Trials: Non-Accrual Insights from DBCG NATURAL and PROTON trials

Grace McKinney: Actively engaging multi-level stakeholders in cancer related studies: a scoping review

Jesper Fjølner: Femoral arterial cannulation and invasive blood pressure measurement in out-of-hospital cardiac arrest – a pilot study

Oral presentation

Fardous Reaz: Enhanced Normal Tissue Sparing in Proton Minibeam Radiation Therapy (pMBRT): Experimental Evidence and Quantification

Session 12 - Cardiovascular disease session 1

Pitch

Elena Jørgensen: Initiation of cardioprotective glucose-lowering drugs according to sex and educational level: a Danish nationwide cohort study

Kathrine Abildskov Friis: Heat shock protein 47: A novel biomarker of thrombosis risk

Line Hjorth Stjernholm Nielsen: The association of weight change and incident hypertension in the Danish Blood Donor Study cohort

Anna Holtz Hansen: Experimental evaluation of the Effects of Hypoxia on FLASH

Lene Halkjær: Effect of Treatment with Finerenone on Cardiovascular Target Organ Damage in Patients with Type 2 Diabetes – A Randomized Trial.

Anne Lind Malte: The fibrinolytic system in venous thromboembolism recurrence: pathophysiology and risk assessment

Flash talk

Simon Graff: Healthcare activities in general practice preceding FH diagnosis

Yumeng Li: Prediction of Cardiovascular Markers and Diseases Using Retinal Fundus Images and Deep Learning: A Systematic Scoping Review

Tarannum Ara: Understanding the neuroprotective role of the novel HCO₃⁻ sensor RPTPy during ischemic stroke

Henriette Ladegård Skov: Inter-arm blood pressure differences and within-visit blood pressure variability in early pregnancy and the risk of pre-eclampsia

Oral presentation

Louise Bjerregaard Henningsen: Functional capacity by cardiopulmonary exercise testing is not related to health status in obstructive hypertrophic cardiomyopathy

Session 13 - Immune mediated diseases 1

Pitch

Agnete Overgaard Donskov: Identifying patients with polymyalgia rheumatica in primary- and secondary health care in Denmark: the positive predictive value of a register-based method.

Nicolai Olesen Haahr: Targeted Interferon Beta Delivery for Multiple Sclerosis Therapy Using Programmable Immune Reactive Cells

Nathalie Jäck: An in vitro system for testing human antibody responses to carbohydrate antigens

Flash talk

Nanna Sutter Rolighed: Faecal Microbiota Transplantation against chronic diarrhea in Patients with Systemic Sclerosis – a randomized, double-blinded, safety and pilot-efficacy study

Kerstin De Keukeleere: VZV-induced acute retinal necrosis in a patient with a splice-site variant in ZC3HAV1 suggests an important antiviral role for ZC3HAV1/ZAP in VZV infections

Camilla Charlotte Mærsk-Møller: Comparative Study of High-Efficacy, Disease Modifying Treatment of Relapsing Multiple Sclerosis CoSHED RMS

Sofie Rahbek Dorset: CRISPR/Cas base editing to genetically correct chronic granulomatous disease-causing variants in CYBA and CYBB

Maya Dyveke Schou:

Pomalidomide as an immune-enhancing agent for the control of HIV (PEACH)

Giacomo Schmidt Frattari: Multi-omics characterization of the immunological and HIV-1 landscape after treatment with broadly neutralizing antibodies

Oral presentation

Yan Hu: Atg14-Atg6 subcomplex has a central role in the organization of phagophore assembly site

Session 14 - Rehabilitation

Pitch

Frederik Bonde Jensen: Efficacy of community-based brisk walking on physical function, comorbidities, cognition, disease severity, and quality of life in people with Parkinson's disease.

Katrine Schilling Andersen: The WORK-IT-OUT study. Optimizing Biopsychosocial Rehabilitation for Low Back Pain: Integrating Workplace Interventions to Support Employees on Sick Leave – A Systematic Review.

Johanne Kolind Bech: The IMPROVEHIP Study: Early diagnostics and treatment of acute bleeding in older patients with hip fracture to prevent delirium and improve rehabilitation

Flash talk

Trine Arnam-Olsen Moos: Suffering and well-being as experienced by adults with refractory epilepsy undergoing rehabilitation in a community setting and their next of kin - a qualitative study.

Katrine Astrup Sørensen: Development and reporting of a cross-sectoral cognitive rehabilitation intervention for critically ill patients

Mette Nørtoft Nielsen: Nutritional care: A complex nurse-led intervention to address overweight in adults following their first-time stroke.

Ann Louise Hanifa: Virtual Reality: Acceptability of an intervention for relaxation and distraction in intensive care.

Rikke Daugaard: Early Remote Rehabilitation to Improve Health of the Elderly after Cardiac Surgery (RECARD) Trial

Sedsel Kristine Stage Pedersen: Development of the intervention Get going After concussion Lite (GAIN Lite) for adults with mild-to-moderate persistent post-concussional symptoms: Participants perspective on relevance, feasibility and acceptability

Oral presentation

Johan Kløvgaard Sørensen: The Effect of Local Anesthetic Volume for Popliteal Plexus Block on Nerve and Muscle Function in the leg

Session 15 - Cancer 1

Pitch

Lotte Krog Eriksen: Risk of preeclampsia in women with moderate cervical dysplasia

Danny Mortensen: Towards preventing reoperations in breast cancer patients with intraoperative surgical margin assessment using spectral microCT

Naja Lange: Investigating the impact of T cell receptor repertoire diversity on cancer outcome

Randi Kræmmer Nielsen: Co-creating an Advance Care Planning (ACP) model in general practice with professional end-users

Stine Bisgaard Greve: Protocol: Mammography Screening with Artificial Intelligence

Elisabeth Solmunde: Predictors of late breast cancer recurrence: development and validation of an algorithm to predict late breast cancer recurrence

Johanne Hollands Steffensen: Sexual Dysfunction and Gynaecological Complication in Women After Treatment for Anal Cancer

Flash talk

Ida Ravnsbæk Johannsen: Temporal Trends in Incidence and Mortality of Colorectal Cancer in Denmark from 2007 to 2022

Ane-Kersti Skaarup Knudsen: Adequacy of excisional treatment for cervical precancer in Denmark.

Janni Mølsted Siemer: Danish National Penile Cancer database: patient and penile cancer characteristics, and management

Oral presentation

Jonas Busk Holm: HbA1c Levels and Breast Cancer Prognosis in Women without Diabetes

Session 16 - Epidemiology

Pitch

Cæcilie Laigaard Skejø: Inflammatory Bowel Disease during Pregnancy and the Well-Being of Offspring

Nanna Makholm Østergård: Real-life clinical experience of antifibrotic therapy in patients with progressive pulmonary fibrosis: Risk factors for progression and non-adherence

Søren Korsgaard: Incidence Rate of Infective Endocarditis by Socioeconomic Position: A Danish Nationwide Cohort Study (2000–2022)

Sissel Jessen Weissert: Physical Activity and fecundability in a Danish Preconception Cohort – isothermal substitution analysis

Flash talk

Sofie Kejlberg Al-Mashhadi: The Clinical Presentation of and Mortality in Patients with Stroke Using Glucocorticoids

Christine Mailandt Ljungberg: Risk of Urogenital Infections in Patients with Type 2 Diabetes Initiating SGLT2i Versus GLP-1RA: A Danish Cohort Study

Sidse Høyer: Are Individuals Born Small for Gestational Age at Increased Risk of Acute Kidney Injury?

Mette Vestergård Pedersen: Perinatal hypoxia assessed by umbilical cord blood pH in combination with Apgar score and the risk of attention deficit hyperactivity disorder
Sofie Kejlberg Al-Mashhadi

Anne Østergaard Nannsen: Development of the Nordic Nutrition Recommendations 2023 food-based diet score and its association with all-cause mortality in two Swedish cohorts

Oral presentation

Tina Lund Leunbach: Prevalence, incidence, and age at diagnosis of males with hypospadias – a nationwide population-based epidemiological study

Session 17 - Cancer diagnostics 1

Pitch

Sarah Søltøft Rasmussen: Diagnostic Delay in Cutaneous T-cell Lymphomas

Lea Elisabeth Bank Kristensen: Overweight, obesity and the clinical course of endometrial cancer

Emma Roger Andersen: The molecular landscape of EML4-ALK variants and their clinical importance

Signe Bülow Therkildsen: OPTIMIZED-FIT: Use of FIT-values to decide differentiated screening-intervals in colorectal cancer screening – a nationwide register based cohort study

Martin Kjær Simonsen: Paving the way for complete registration of Danish women with ductal carcinoma in situ in the breast from 2008-2023: A Danish Breast Cancer Group project

Mathias Hald: COST OF ILLNESS OF OROPHARYNGEAL CANCER: A MATCHED COHORT ANALYSIS

Simon Nørregaard Agersnap: Analyzing antibodies against neo-antigens on a single cell level in melanoma patients.

Sarah Eckholdt Jensen: Dosimetric Impact of Respiratory and Anatomical Variations in Patients from the International Randomized PROTECT Trial: Photon versus Proton Therapy for Locally Advanced Esophageal Cancer

Flash talk

Lærke Rosenlund Nielsen: ctDNA can detect minimal residual disease in curative treated non-small cell lung cancer patients using a tumor agnostic approach

Anne Vittrup Jakobsen: Feasibility of Weekly Cisplatin and Radiotherapy for Localized Anal Cancer – A Danish Anal Cancer Group report

Oral presentation

Sebastian Søby: Pembrolizumab as first line treatment for recurrent or metastatic head and neck squamous cell carcinoma: a multi-institutional DAHANCA cohort study

Session 18 - Drug risks and benefits

Pitch

Sofie Lindman Juul: Is there an effect of local vaginal estrogen treatment on the hemostatic parameters and contact activation in women? - A research year project

Anna Vingborg: Sodium-Glucose Cotransporter-2-Inhibition Prevents Development of Left Ventricular Hypertrophy

Julie Loft Nagel: ⁶⁴Cu-Methanobactin (ARBM-101) biodistribution and excretion examined in pigs by whole-body PET/CT – pharmacokinetics of a potential new treatment for Wilson disease

Ali Hussein Jaber Mejren: Haemodynamic Effects of Dobutamine in Patients with Wild-type Transthyretin Amyloid Cardiomyopathy (ATTRwt)

Flash talk

Ida Marie Marquart Løber: Untangling the Postmortem Metabolome: A Machine Learning Approach for Accurate PMI Estimation

Marlene Schouby Bentestuen: A Systematic Review of Pharmacogenomic Markers Associated with Drug-Induced QT Prolongation

Christian Byskov Nielsen: Aspirin versus Aspirin and Fondaparinux Prior to Early Invasive Strategy in Patients with NSTEMI - FOXY Trial

Abarajitha Thiyagarajah: Can fremanezumab (a monoclonal antibody targeting calcitonin gene-related peptide) reduce pain intensity in patients with complex regional pain syndrome?

Signe Dalsgaard Justesen: Impact of maternal antibiotic use during pregnancy on ABC family transporters in human, term placenta

Oral presentation

Casper Homilius: Lactate is a positive inotropic agent with vasorelaxant and venocontractile properties

SECOND ROUND OF SESSIONS – 14.30 TO 15.40

Session 19 - Basic medical research 2

Pitch

Andreas Møller Lind: Quantitative investigation of reversible binding of Na⁺

Mette Skovbo Self: The Role of Extracellular Vesicles in Ischemic Preconditioning

Anne Grosbøl Jensen: Phagocytosis of neurons by brain macrophages (microglia) and its role in neurodegenerative disease

Jacob Hørlück Janns: Packaging CRISPR/Cas9 toolkits in virus-derived nanoparticles for precise DNA editing

Simon Bøje Fammé: Understanding cellular response and transport mechanisms affecting

nuclear uptake of genome editing tool kits delivered in virus-derived nanoparticles

Flash talk

Lena Anastasia Magdalena Nielsen: Unravelling the molecular roles of Ankrd1 and its associated signaling pathway in DCM etiology

Virginia Fochi: Unravelling the role of Cullin3-linked protein degradation in the development of neuromuscular disorders

Anne Mette Gissel Jensen: IMPAIRED DIMERIZATION PROPERTIES AS A COMMON MECHANISM OF PATHOGENECITY FOR A SUBSET OF ALZHEIMER'S DISEASE-ASSOCIATED SORL1 VARIANTS IN 3FN-DOMAINS

Lærke Bay Marcussen: Liver Sinusoidal Endothelial Cell Junctions in Metabolic Dysfunction-Associated Steatotic Liver Disease - **CANCELLED**

Oral presentation

Charlotte Nygaard: Post-traumatic headache: Phenotyping, exploring pathophysiological insights and novel treatment strategies

Session 20 - Reproductive health

Pitch

Johanne Berntsen: Investigating mosaicism for monosomy X in the placenta and fetus: A registry-based study of cases from Denmark 1983 - 2021

Maria Gabriela Barslev Jensen: Correlation Between Expert Clinical Diagnoses and Invasive Urodynamic Findings

Mette Jørgensen Langergaard: Prenatal exposure to parental smoking and infertility in sons and daughters: a cohort study

Karen Omann Binderup: A case-control study of the clinical utility of DNA-methylation markers for endometrial cancer detection in patient-collected urine and vaginal samples

Stine Bundgaard: Pharmacological activation of CPS1 increases activation of ovarian dormant follicles, through elevated arginine levels and mTORC1 signaling

Flash talk

Laura Bjerre Andersen: The essential role of calcium signalling in lactation: An analysis of calcium signalling mechanisms in murine models

Lea Kirstine Hansen: Transvaginal cervical cerclage – how well do surgeons assess their own procedures?

Asli Sena Kücüküydiz: Maternal drug exposure and the risk of congenital and early-onset hearing loss in children: a systematic review

Helena Hørdum Breum Andersen: Diseases during pregnancy – is gut the answer? -
CANCELLED

Oral presentation

Josefine Tang Rørbech: Siblings' Experiences of Transitions Between Hospital and Home in Pediatric Oncology: A Qualitative Study

Session 21 - Neuroscience 3

Pitch

Andreas Lund Pedersen: The combined impact of migraine and smoking on risk of premature stroke and myocardial infarction: A Danish population-based cohort study

Julie Bjørn Bay: How to Reduce Overuse of CT in Patients with Minor Head Trauma: Study Protocol for a Multicenter Cluster-Randomized Trial (HEADWISE)

Flash talk

Saba Molhemi: Isoflurane anesthesia alters 31P Magnetic Resonance Spectroscopy markers in mouse Brain: A comparative in vivo study

Josefine Jul Jarbæk Nielsen: Associated Autoimmunity in Myasthenia Gravis in Denmark: A Nationwide Case-Control Study

Nayereh Ghazi: Search for Cortical Magnetic Resonance Imaging biomarker for Amyotrophic Lateral Sclerosis

Simon Kjær Simonsen: KetoBrain: Effects of exogenous ketone ester supplementation in human cerebrospinal fluid

Andreas Færgemand Laursen: Course of neurocognitive development from 7 to 15 in children at familial high risk of schizophrenia or bipolar disorder. The Danish High Risk and Resilience Study – VIA 15

Benjamin Yamin Ali Khan: Are neuromuscular Long-term COVID-19 complications chronic? A quantitative and single fiber electromyography follow-up study

Oral presentaion

Ana Teresa Lourenço Queiroga: Brain Dynamics of Music Improvisation: Insights from MEG and fMRI

Session 22 - Infectious disease biology

Pitch

Maja Skjærbæk Sønderby: Investigating MAVS' role in a Novel Human Airway Epithelial Model

Sofia Sedó Korsgaard: Detecting FcγR activation by anti-HIV bNAb immune complexes

Anders Birk Andersen: Effects of T cell function and specificity on time to viral rebound during analytical antiretroviral treatment interruption in people with HIV

Jannifer Jasmin Thavarajah: HIV Reservoir Size & Neutralization Efficacy of Broadly-Neutralizing Antibodies (bNAbs) in HIV-2 Infected Individuals in Guinea-Bissau.

Eva Anna Marianne Baerends: Development of a self-amplifying circular RNA vector based on the hepatitis delta virus

Laura Marie Aalkjær Danielsen: Longitudinal changes in the nasal microbiome in patients with long COVID-19 compared to healthy controls

Maria Lange Pedersen: Identification of novel antiviral targets against measles virus infection

Nanna Pi Lauritsen: HIV-resistant anti-HIV CAR T cells to effectively control HIV in vivo

Siri Nana Halling Svensgaard: Safety of the monoclonal anti-HBsAg antibody HepB mAb19 in chronic Hepatitis B infection: A first-in-human trial

Rasmus Alstrup Nielsen: Studies of the clinical features and host-immune response in vascular graft and endograft infections

Oral presentation

Aimi Danielle Munk Hamilton: Increased water intake dilutes protective uromodulin levels in urine and increases rates of ascending UTI in a murine model

Session 23 - Surgery 2

Pitch

Rasmus Ilkjaer: Determinants of survival after pancreatic cancer surgery

Christine Krogsgaard Schrøder: How to measure quality of hip fracture care across healthcare sectors

Mathias Høgsholt: Open surgical reconstruction versus sham surgery in the treatment of hip abductor tendon tears (HIPAS): A double blinded, randomized, placebo-controlled trial

Flash talk

Frederik Nicolai Foldager: First-line treatment for femoroacetabular impingement syndrome and hip-related quality of life: study protocol for a multicentre randomised controlled trial comparing a 6-month supervised strength exercise intervention to usual care (the Better Hip Trial).

Simon Storgaard Jensen: Mental disorders increase the risk of reoperations and mortality after surgery for hip fracture: a Danish population-based cohort study

Karoline Assifuah Kristjansen: Perioperative treatment with tranexamic acid in melanoma (PRIME): protocol for a Danish multicentre randomised controlled trial

Kim Morgenstjerne Ørskov: The Effect of Remote Ischemic Conditioning on Delayed Cerebral Ischemia in Aneurysmal Subarachnoid Hemorrhage - Rationale and Study methods

Helle Joon Christiansen: Intelligent Physical Exercise Training (IPET) and intraoperative ergonomic recommendations (ERGO) for preventing and rehabilitating musculoskeletal pain among abdominal and pelvic surgeons: Protocol for a multicenter randomized controlled trial

Oral presentation

Christian Jessen: An iliopsoas plane block and a subpectineal obturator nerve block reduces opioid consumption after hip arthroscopy - Results of two Triple-Blind, Randomized, Placebo-Controlled Trials

Session 24 - Basic medical research 3

Pitch

Nicolai Matias: Establishing an experimental porcine marginal kidney model - **CANCELLED**

Vasileios Theologidis: Bradykinesia and postural instability in a model of prodromal Synucleinopathy with α -Synuclein aggregation in the gigantocellular nuclei

Daniel Zornow Kruse: Piperine increases submaximal and maximal concentric contractility of intact fast- and slow-twitch rat muscles

Marc Gjern Weiss: Activation of the Innate Immune System in Brain-Dead Donors Can Be Reduced by Luminal Intestinal Preservation During Organ Procurement Surgery - A Porcine Model

Cecilie Munch Johannsen: Reducing neurological injury following cardiac arrest in a clinically relevant porcine model

Jesper Frank Andersen: The role of secretin and its receptor in renal disease progression

Amalie Dyrelund Broksø: Tunable transcriptional modulation using CRISPR-based tools

Flash talk

Madison Clark: Lipoxins mediate restoration of lymphatic function in an experimental model of obesity

Pernille Lajer Sørensen: Megalin is Essential for the Visual Cycle and Retinal Health

Oral presentation

Ditte Emilie Munk: Methanobactin rapidly facilitates biliary copper excretion in the LPP Wilson disease rat model visualised by ^{64}Cu PET/MRI

Session 25 - Cancer 2

Pitch

Jesper Huitfeldt Jespersen: Predicting renal cell carcinoma outcomes with spatial transcriptomics

Mostafa Hossam Mahmoud M Khairy: Using CRISPR Cas9 as a shredding machine to target the repetitive elements that lie in the exclusively open chromatin areas in cancer

Mette Kathrine Nygaard: Bortezomib-induced neuropathy detected with neurofilament light chain - a biomarker for axonal damage.

Diana Faibish: Investigating the role of CD47 in Cancer Cachexia

Katharina Wolter: Gene Therapy for Childhood Cancers Driven by Fusion Oncogenes

Cecilie Poulsen: Glutamine Metabolism Fuels Oncolytic Virotherapy in KEAP1-mutant Lung Cancer

Sofie Krarup Thomsen: Pentose Phosphate Pathway Implication on Prostate Cancer Progression

Flash talk

Ronja Tügel Carstensen: Feasibility of CSF acquisition and ctDNA nanopore sequencing for pediatric patients with CNS tumors in a population-based multicenter approach

Mathilde Søbye Blaavand: Exploring Rock1 activation in invasive Nf1-deficient Glioblastoma

Oral presentation

Tobias Stemann Lau: The Usefulness of Circulating Fibrosis Markers in Detection of Carcinoid

Session 26 - Public health 3

Pitch

Freja Hauberg Hallen: Accelerometer-Measured Physical Activity in the First Year Postpartum: A systematic review

Louise Birk Suder: Pre-Pregnancy Weight Loss and Reducing Childhood Overweight

Michelle Vestergaard Stadelhofer: Parental or child neurological conditions as predictors or risk factors for physical child abuse

Kristoffer Torp Hansen: The impact of infection status on reported symptoms, post-acute sequelae, and long-term sick leave

Elisabeth Due Andersen: Navigating Relief: A Comprehensive Scoping Review of Mechanisms of Change in Interventions for Low Back Pain in Primary Care

Cecilia Hee Laursen: Long COVID – sick leave, predictors for return to work and societal costs

Christian Emil Sejersen Brinck: Communication as a contributing factor to adverse events after tele-triage in out-of-hours primary care in Denmark: a register-based case-control study

Flash talk

Trine Brøns Nielsen: A realist process evaluation of a rehabilitation intervention for patients with long COVID in a Danish setting

Asbjørn Frederik Kloppenborg: Does short-term exposure to PM2.5 concentration effect the transient risk of Myocardial Infarction?

Session 27 - Health statistics

Pitch

Bertram Lahn Kirkegaard: Strategies for defibrillation during out-of-hospital cardiac arrest (STRAT-DEFI)

Mathilde Diekema: Colorectal Cancer ctDNA Detection Using a Statistical Model of Nucleotide Variant and Indel Error Rates

Maria Louise Køpfli: Compensation claim patterns in out-of-hours primary care services

Frederik Skovbo: Advancing Forensic Analysis: A Machine Learning Approach to Estimating Blood Sample Time-of-Deposition

Flash talk

Janus Rønn Lind Kobbersmed: Principled normative modelling of brain functional connectivity predicts the future development of brain pathology

Sky Rohrer: time-resolved in-vivo dosimetry during electron beam FLASH with a fibre-coupled inorganic scintillator-based detector system - **CANCELLED**

Merete Ajstrup: Navigating Transitions of Care: Construct Validity of PACT-M and CTM-15 in a Danish healthcare setting

Paul Jaques Gilbert Maublanc: Inducing Self-Related Emotion Evaluation by Modulation the Speaking voice (SEEMS)

Oral presentation

Mia Aagaard Doherty: Cancer Risk in Individuals with Neurofibromatosis 1 – A Danish Nationwide Cohort Study with Long-term Follow-up

Session 28 - Diagnostics and technology

Pitch

Anders Valentin Abildgaard Nielsen: A study in healthy volunteers to help victims of nitrous oxide related crimes

Josefine Rosenskjold Madsen: Validation of a Reversible Kinetic Model for 20-min Dynamic Whole-Body PET Imaging of the Total Distribution Volume

Johannes Ulrich Wittig: The Ventilation during In-hospital Cardiac Arrest (VENT-IHCA) Study Protocol

Marius Eldevik Rusaas: Connectome analysis of dynamic whole-body PET for detection of disease-specific metabolic patterns

Flash talk

Amalie Lykke Olsen: Development and Evaluation of a Lipid Nanoparticle (LNP) Library for Enhanced Bi-functional Cargo Delivery

Helene Bei Thomsen: Racial differences in continuous glucose monitoring-based 60-min glucose predictions among people with type 1 diabetes

Sie Fensman: Phenotyping and characterization of a Danish Wild-type Transthyretin Amyloidosis Cardiomyopathy cohort: A cross-sectional study

Siria Pasini: RESPECT: preliminary results on intra-subject test-retest repeatability and reproducibility of diffusion measurements

Oral presentation

Nora Spraakman: Optimizing mitochondrial and kidney function during the process of kidney donation, preservation and ultimately transplantation

Session 29 - Mental health 2

Pitch

Yawei Ma: The alterations of brain dynamics in schizophrenia are mainly from the association cortex

Christina Krogner Caspersen: Coercion in child and adolescent psychiatry. Who are at risk? (CoCAP)

Anna Westh Stenbro: Internet-based versus synchronous cognitive behavioural therapy for patients with Gambling Disorder: A non-inferiority randomized controlled trial

Josefine Klakk Jeppesen: Well-being in schoolchildren with neurodevelopmental disorders: A nationwide study

Lea Nørgaard Sørensen: Stop for Stress - comparing an online and a group intervention for work-related stress

Flash talk

Nina Friis Bak Fuglsang: Efficacy and acceptability of pharmacological interventions for insomnia in patients with severe mental illness: A systematic review and meta-analysis of randomised trials

Kirstine Bundsbæk Bøndergaard: End-of-life quality-measures for Patients with Pre-Existing Severe Mental Disorders

Sara Kolding: Detection of Bias in Prediction Models for Clinical Psychiatry based on Data from Electronic Health Records

Oral presentation

Thomas Tandrup Lamm: Five-factor Personality Traits and Functional Somatic Disorder: A Systematic Review and Meta-Analysis

[Session 30 - Qualitative research and mental health](#)

Pitch

Johanne Farø: Navigating the Unknown: A Qualitative Study of Parental Responses to a Prenatal Genetic Mosaicism Result

Flas talk

Athanasia Kontouli: Unveiling the Musical Features of EDM Subgenres: A Music Information Retrieval Approach

Anne Poulsen: Facilitators and barriers to collaboration between general practice and sickness benefits office in return to work processes

Inger Dorf: Parental Decision-Making After Receiving a Prenatal Diagnosis of Turner Syndrome: A Qualitative Interview Study

Manja Rothenberg: A two-year transition program shows impact on newly graduated nurses' job satisfaction and intention to stay.

Cecilia Pihl Jespersen: Epistemic Structures and Their Influence on Illness Understanding of Functional Somatic Disorder

Eileen Dorte Shanti Connelly: Evaluating User Perspectives in Cross-Sectoral Care for Functional Somatic Disorders - A Qualitative Process Evaluation

Oral presentation

Anne Wilhøft Kristensen: Development and Feasibility Testing of a Clinical Trial Patient Decision Aid

[Session 31 - Public health 3](#)

Pitch

Alexander Jahn Jensen: Occupational mechanical exposures and upper body osteoarthritis

Anne Kristine Lundgård Christensen: Exposome-wide association study (ExWAS) investigating dietary, physiological, and medical factors in relation to BMI z-score and BMI in children and adolescents

Thea Emily Benson: Pubertal timing and tempo and risk of depression in adolescence

Nanna Pedersen Larsson: The interplay between genetic liability and psychosocial working conditions in the aetiology of major depressive disorder

Aurélie Mailhac: Discontinuation of semaglutide (Wegovy®) therapy for weight loss: Population-based study of the first 83,193 users in Denmark

Flash talk

Christina Bisgaard Jensen: Post-acute non-specific symptoms following COVID-19 vaccination: A Danish population-based study

Marie Hauge Pedersen: Associations between multimorbidity patterns and patient-perceived treatment burden: A population-based cross-sectional study of Danish survey and register data

Marie Dahl Jørgensen: Physical Activity Patterns and Spontaneous Abortion

Oral presentation

Mette Fogh: Effectiveness of a kindergarten-based obesity prevention intervention to reduce risk of overweight at school entry

Session 32 - Immune mediated diseases

Pitch

Thea Hoffmann Nielsen: Anti-PM/Scl-75 and 100 autoantibodies increase IL-8 cytokine production in PM/SSc overlap syndrome patients.

Nanna Mørk Vammen: Prevalence and heritability of autoantibodies neutralizing type I interferons in centenarians and mono- versus dizygotic twins

Celine Thiesen: Measurement of the bioactivity for anti-topoisomerase 1 antibody in plasma from Systemic Sclerosis Patients

Lykke Mo Ran Skaarup: Repurposing disease-modifying antirheumatic drugs in low-grade inflammation

Lykke Mo Ran Skaarup: Repurposing disease-modifying antirheumatic drugs in low-grade inflammation

Samantha Nelson: Risk factors for cardiovascular disease in Systemic Lupus Erythematosus: Examining DNA-protein nanoparticles.

Maja Louise Hansen: Towards an advanced understanding of microglia as pharmacological targets in disease: A molecular exploration of microglia dynamics at the single-cell level in models of multiple sclerosis

Flash talk

Christoffer Søvsø Våben: Diagnostic accuracy of a clinical polymyalgia rheumatica diagnosis: Impact of prednisolone initiation and a short-term discontinuation

Josephine Gladov: Genome-wide association study of allergen-specific Immunoglobulin E sensitization towards common respiratory sensitizers

Oral presentation

Fredrikke Tove Birgitta Dam Larsen: Effectiveness of SARS-CoV-2 vaccination in immunocompromised patients

Session 33 - Paediatrics

Pitch

Rasmus Saul: Fibroblasts and Inflammation in the Paediatric Stroma (FIPS)

Natalie Vestergaard Olesen: AID-early onboarding: Automated Insulin Delivery at Diabetes onset in children – Sleep, Metabolic regulation, cognitive function and family burden: Study protocol

Lise Fischer Mikkelsen: Blood pressure and cardiovascular risk factors in Danish children and their parents

Ann-Kristine Mandøe Svendsen: Efficacy of solifenacin, mirabegron and combination therapy in children with daytime urinary incontinence (BeDry): A randomized single-blinded controlled trial

Bjarke Bøttger: Improvements in Daily Physical Activity and Exercise in School Children: The ActChild Study Protocol

Sigrid Agersnap Bom Nielsen: Study protocol: The CI-CAP Youth Project on Cognitive Bias and Interoception in chronic abdominal pain in youth

Flash talk

Mads Andersen: Early-onset neonatal infection and school performance

Sofie Axelgaard: New aspects on alarm treatment of nocturnal enuresis.

Oral presentation

Anders Schram: Impact of a simulation-based team training program for healthcare professionals in pediatric departments: A non-randomized controlled trial

Session 34 - Cardiovascular disease 2

Pitch

Maya Sanjuan Jensen: Pulmonary Perfusion Changes of Oxygen in Acute Pulmonary Embolism: A [¹⁵O]-H₂O PET exploration in a porcine model

Archana Kulasingam: Visualization of Coronary Artery Disease for Modification of Risk Factors (VICAD-RISK study)

Flash talk

Maja Brøgger Thomassen: 24 hours of donor heart machine perfusion before heart transplantation - is that possible?

Jacob Hartmann Søby: Use of Antianginal Medication at Referral to Myocardial Perfusion Imaging in Patients with Established Chronic Coronary Syndrome

Nina Stødkilde-Jørgensen: Mortality related to left ventricular ejection fraction and coronary artery disease in non-ST-segment elevation myocardial infarction

Malene Glud: The differences in measurement of adherence in secondary prevention of atherosclerotic cardiovascular disease – A scoping Review

Malene Højgaard Andersen: Low-Density Lipoprotein Cholesterol, Coronary Plaque burden, and Cardiovascular Risk in individuals beyond 75 years of age: The Western Denmark Heart Registry

Oral presentation

Henrik Laurits Bjerre: Labor market participation among working-age heart failure patients with a cardiac resynchronization therapy device

Session 35 - Cancer 3

Pitch

Mette Møller Steiniche: Tumor-specific circulating cell-free DNA (ctDNA) and its clinical value in predicting response to palliative systemic treatment or survival in patients with pancreatic cancer: a systematic review and meta-analysis

Signe Hedebo Hansen: Allogeneic Bone Marrow Transplantation in CTCL: Potential Pathway to Cure

Malene Krabbe Østergaard: Circulating tumor DNA for assessing neoadjuvant treatment response and recurrence risk in rectal cancer patients

Flash talk

Christoph Felix Kollmann: Therapeutic modulation of the KEAP1/NRF2 axis improves efficacy of onco-virotherapy in hard-to-treat high-grade cancers.

Henriette Nymark Friis: A phagocytosis checkpoint receptor with cancer biomarker potential: Soluble Leucocyte Immunoglobulin-like Receptor subfamily B member 1 (sLILRB1)

Stine Mary Vissing: Long non-coding RNAs in childhood ependymoma: key mediators of cellular differentiation?

Silke Dahlbom Nielsen: The role of long non-coding RNAs and the tumor microenvironment in the treatment response to bendamustine-rituximab therapy in mantle cell lymphoma

Oral presentation

Asbjørn Kjær: Low T cell diversity is associated with poor outcome in bladder cancer: a comprehensive longitudinal analysis of the T cell receptor repertoire

Session 36 - Dentistry

Pitch

William Astrup Kaaber: Factors affecting long-term prognosis of root-canal treated teeth

Sara Volf Jensen: Oral Hygiene Habits in Caries-Prone Individuals after Radiotherapy for Head and Neck Cancer – an Exploratory Clinical Study

Karina Herholdt Petersen: Empowering Tomorrow's Dentists: Tackling Social Inequality in Dental Health through Practice-Oriented Initiatives

Hossein Mohammad Rahimi Khansari: Leveraging Deep Learning to Improve Cone Beam Computed Tomography Image Quality, Reduce Patient Radiation Exposure and Enhance Diagnostic Capabilities

Sanyam Jain: Synthetic Dental Radiography using Generative Artificial Intelligence

Sukeshana Srivastav: A Feasibility Study on the reliability of Dental Dedicated MRI in two-dimensional Orthodontic Diagnosis and Treatment Planning

Nicole Renner: Unravelling the mechanisms of TMD pain disorders

Flash talk

Nicoline Hjort Larsen: 3D Cephalometric evaluation in Orthognathic Patients: Outcomes from a Total Digital Workflow

Oral presentation

Anika Kofod Petersen: Advancing Forensic Odontology: A 3D Pipeline for Disaster Victim Identification

Session 37 - Cancer diagnostics 2

Pitch

Maiken Mondrup hjelt: Selecting the right patient for enteral feeding tube and optimizing the trans-sectoral support - The S.E.O.S. Head and Neck Cancer Project

Eva Ferlev Jensby: Unravelling the molecular heterogeneity of grade group 1 prostate cancer

Mathilde Aalling: Dysphagia and quality of life in patients with oral squamous cell carcinoma before and after treatment

Casper Urth Pedersen: Overdiagnosis in the Danish breast cancer screening program

Deema Radif: Detection of plasma circulating tumor DNA is not affected by kidney and liver function in patients with muscle-invasive bladder cancer.

Flash talk

Karoline Andersen: HPV sublineages in Danish cervical cancer screening samples

Oral presentation

Laura Andersen: Allelic imbalance for early detection of breast cancer in high depth ultra genomics whole genome sequencing

PHD DAY HEALTH
17 JANUARY 2025
THE LAKESIDE LECTURE THEATRES